



# RIFFLE SAMPLE SPLITTERS

**Riffle sample splitters** are designed to divide samples of bulk materials into two parts of equal size and with equal content. Riffle sample splitters RSS 5, RSS 10, RSS 15, RSS 20, RSS 25, RSS 37,5 and RSS 50 differ in the riffle width, sample receiver volume, and maximum particle size of the material to be divided.

## ADVANTAGES

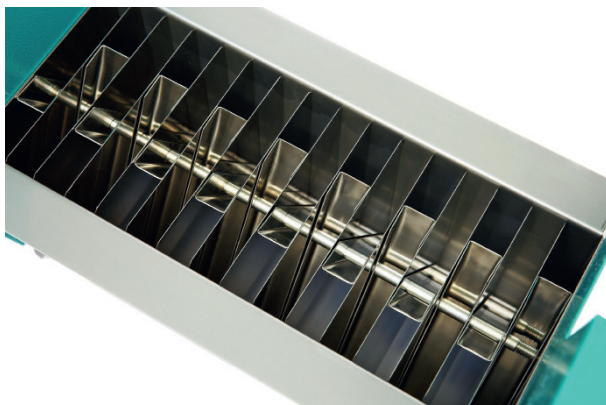
- The splitting unit, sample collectors and charging shovel are made of stainless steel AISI 321;
- The detachable design allows full cleaning of the splitter;
- Low weight.

SPECIFICATIONS	RSS 5	RSS 10	RSS 15	RSS 20	RSS 25	RSS 37,5	RSS 50
Riffle width, mm	5	10	15	20	25	37,5	50
Material feed size, mm, maximum	1,5	3	5	6,5	8	12,5	16,5
Number of riffles	20	16		20		14	10
Full / useful volume of sample collectors, L	3x0,77 / 3x0,5	3x1,2 / 3x0,78	3x4,8 / 3x3,1	3x9,6 / 3x6,3	3x17,5 / 3x12,5		
Overall dimensions, mm (Length x Width x Height)	258x161x220	258x218x220	434x299x343	522x403x403	600x546x403		
Overall dimensions of the 3rd sample collector, mm (Length x Width x Height)	127x110x116	167x127x116	247x216x194	328x257x249	510x270x261		
Weight of a splitter with 3 sample collectors, kg	3,55	4,2	13,3	18,7	27,5	26,5	26,5
Material of splitting unit and sample collectors	08X18H10T (AISI 304)						

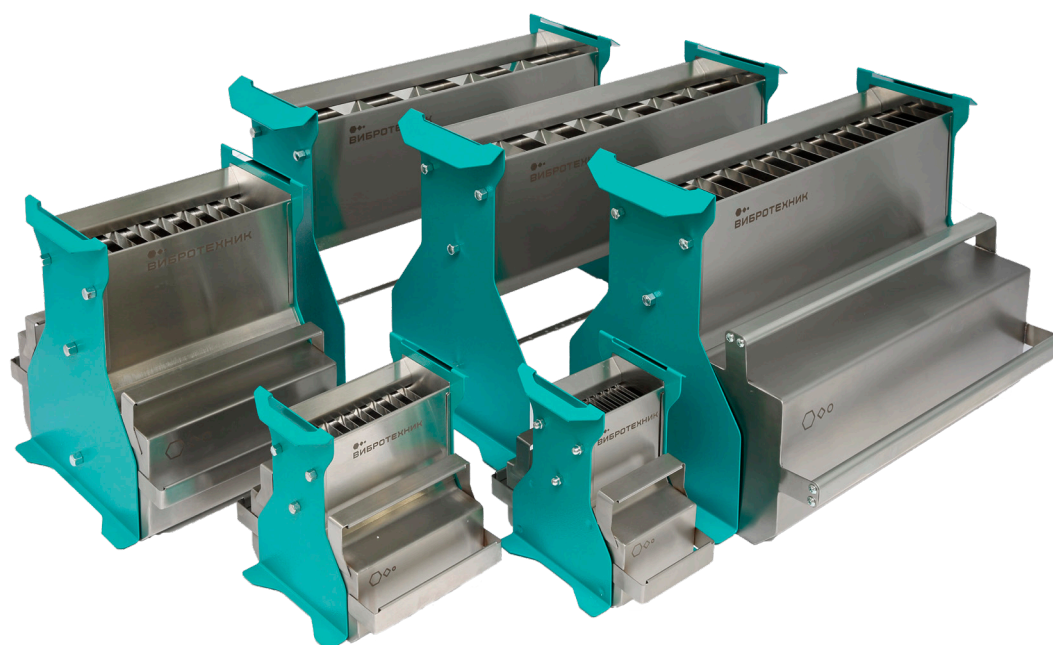
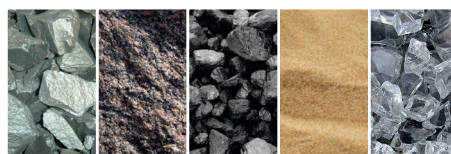
## RIFFLE SAMPLE SPLITTERS

### EXAMPLES OF USE

Any dry bulk materials: ferroalloys, ore, granite, soil, sand, coal, glass



Splitter riffles



**RSS 5, RSS 10, RSS 15, RSS 20, RSS 25, RSS 37,5 and RSS 50**