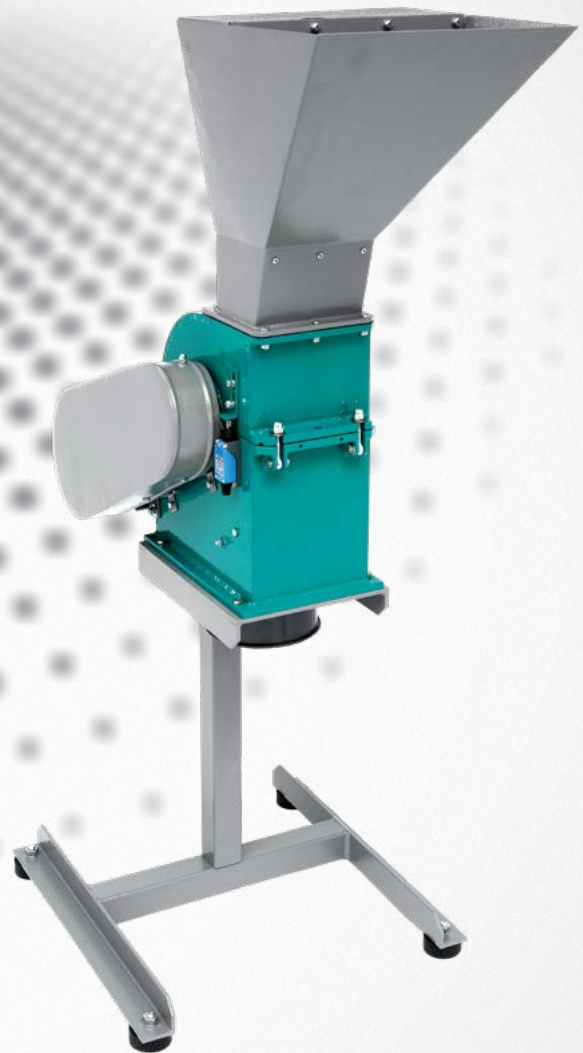




VIBROTECHNIK

Russian avant-garde equipment for milling



HAMMER CRUSHERS



HAMMER CRUSHERS HC 2X2, HC 5X2 AND HC 5X5

Hammer crushers are designed to crush brittle materials and break down conglomerates. The Hammer crusher **HC 2x2** is laboratory-class equipment designed to crush small batches of material with output up to 100 kg/hour.

Hammer crushers **HC 5x2** and **HC 5x5** are industrial-class equipment used in busy laboratories or in small and medium-sized production facilities.

The operational principle of a hammer crusher is based on impact on material particles.

Material particles are broken down:

- when a hammer falls on them;
- when they impact the liner and walls of the housing;
- when the particles collide with each other.

ADVANTAGES

- The ability to obtain various crushed product grain sizes by:
 - installing grates with openings of various shapes and sizes from 0.8 mm;
 - selecting the number and shape of the hammers;
 - changing the **HC 2x2** rotor rpm;
 - installing a smooth or ribbed liner in the cover of the **HC 2x2**;
- Free suspension of the hammers on the rotor axes reduces the probability of mill breakage when an unbreakable object falls into the working chamber;
- The size and configuration of the loading funnel have been selected for safe maintenance and to prevent ejection of material particles during operation;
- The hinged bolts on the cover of the **HC 2x2** provide quick access to the crushing chamber for inspection and replacement of hammers and grates, and cleaning of the chamber;
- Ability to connect to the dust collector to:
 - lower the temperature in the crushing chamber;
 - lower the content of the dust fraction in the product;
 - separate material into three fractions: sedimented into the crusher receiving container, cyclone and bag filter.
- Equipment of the **HC 5x2** and **HC 5x5** with a support frame and receiving containers of various volumes depending on the process task.

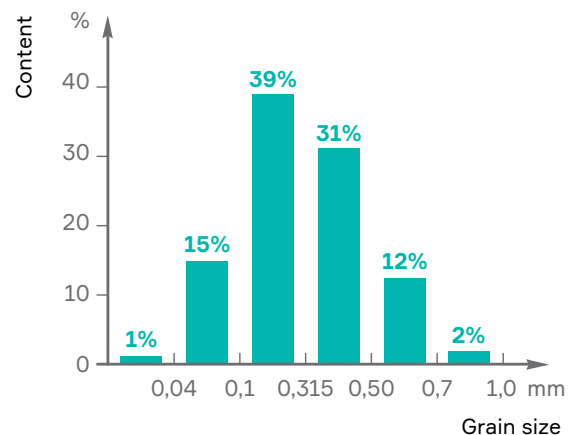


Hammer crusher **HC 2x2**

Crushing on **HC 2x2**

Material: Glass 5.0–8.0 mm;

Output: 70 kg/hour.



INDUSTRIES



Mining



Metallurgical



Construction



Chemical



Pharmaceutical

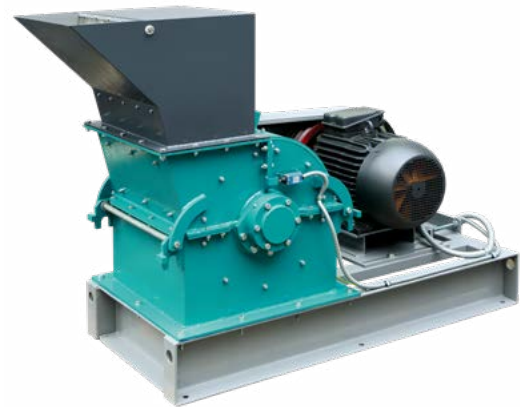
Hammer crushers

APPLICATIONS

Coal, foil, polyester resin, glass, slag, salt, shale, electrical circuits, food products.



Hammer crusher **HC 5x2** with dust collector, support frame, local control panel and two 50-liter receiving containers

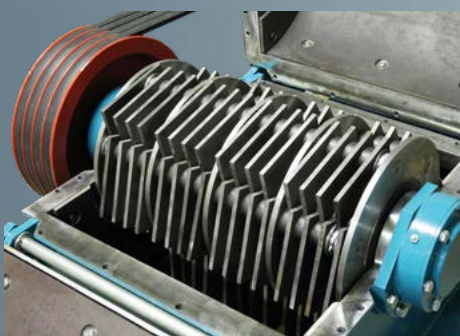


Hammer crusher **HC 5x5**

| Characteristics | HC 2x2 | HC 5x2 | HC 5x5 |
|--|--------------------|--------------------|-------------------|
| Loading door dimensions (mm) | 158 x 110 | 254 x 300 | 300 x 498 |
| Maximum initial material size (mm) | 20 | 100 | |
| Hardness of material crushed | Up to 4 Mohs units | Up to 5 Mohs units | |
| Size of discharge grate openings (mm) | 0.8–20 | 2–50 | |
| Average crushed product particle size at minimum aperture (mm) | 90% < 0,5 | 90% < 2,0 | |
| Maximum output (kg/hour) | 100 | 750 | 1500 |
| Rotor rpm | 1,000–3,000 | 1,500 | |
| Electric motor power (kW) | 1.5–3.0 | 11 | 22 |
| 50 Hz supply voltage (V) | | 380 | |
| Overall dimensions (Length x Width x Height) (mm) | 885 x 550 x 1410 | 1560 x 805 x 1230 | 1755 x 840 x 1185 |
| Weight (kg) | 120 | 580 | 750 |
| Hammer material – tool steel | AISI 1066 | | |



HC 2x2 rotor



HC 5x5 rotor



HC grates and hammers


VIBROTECHNIK

Maliy pr. V.O., 62/2, liter A,
St. Petersburg, Russian Federation, 199178
Tel./Fax: +7 (812) 468-72-12
+7 (812) 643-98-26
E-mail: sales@vt-spb.ru

www.vibrotechnik.com