

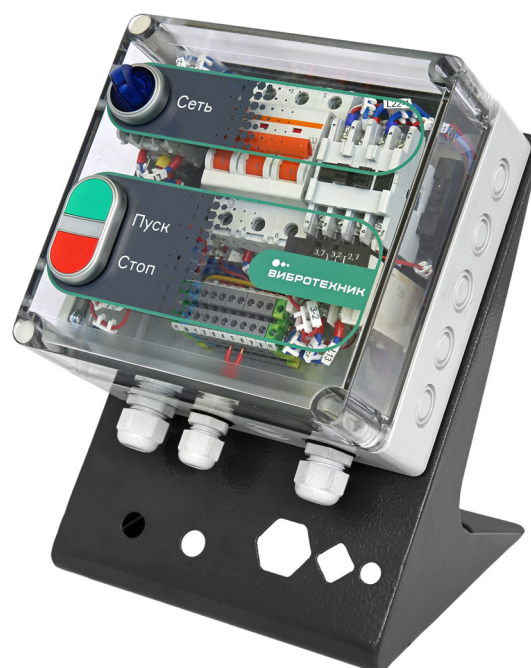
## CONTROL PANELS AND SUPPORT POSTS

The control panels are designed for connecting AC induction motors to the supply circuit and for starting, protecting and shutting them off.

VIBROTECHNIK manufactures two types of control panel: **MCP** with a metal housing and **PCP** with a plastic housing.

The **PCP** control panel is designed for tabletop equipment in laboratories.

The **MCP** control panels are designed for large items operating under severe conditions. The **MCP** has modifications designed for control of process units consisting of several equipment items: the **CMCP** with two pushbutton posts.



**PCP3** control panel on support post

CHARACTERISTICS	PCP1	MCP1	PCP3	MCP3	MCP3-09	MCP3-10	CMCP
Equipment model	VCM 6, DG 65	CM 120, VD 50	VCM 6, VCM 10, VG 1, SG 1, VG 6	SM 50.0, VD 50, CM 120, CM 250, JC 6M, JC 10M, JC 15, HC 2x2, DRC, DG 200, DG 250, Cyclone Dust Collector, VT	HC 5x2	HC 5x5	Crushing Divider Unit with JC, CM 250 with Cyclone Dust Collector, HC 2x2 with Cyclone Dust Collector
Supply voltage (V)	220			380			
Circuit breaker current (A)	4,13	6...13	2...6,3	3...20	32	63	5...25
Thermal overload relay current	3,2, 10	5...10	1,6...3,2	2,5...16	25	50	0,63...20
Overall dimensions (mm):							
Length	205	300	205	300	230	330	330
Width	185	225	185	225	330	330	225
Height	130	155	130	155	165	165	155
Weight (kg)	2,0	4,5	2,0	4,5	6,5	6,5	4,5



# VIBROTECHNIK

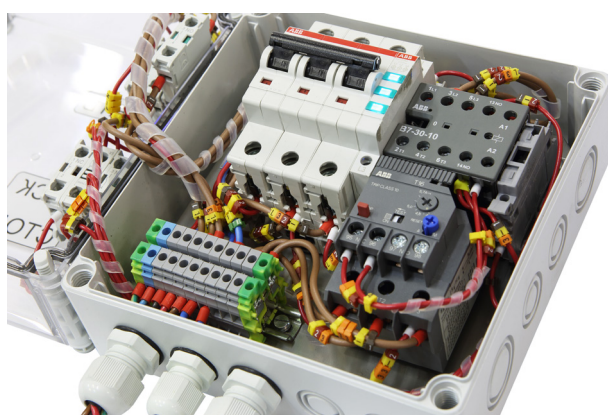
Russian avant-garde equipment for milling

[www.vibrotechnik.com](http://www.vibrotechnik.com)

## CONTROL PANELS AND SUPPORT POSTS

### ADVANTAGES

- IP 54 dust and moisture resistance rating;
- Complies with IEC 60439- 1:2004 “Low Voltage Distribution and Control Components”;
- Automatic power shutoff if the maximum permissible current is exceeded or a short circuit occurs;
- Two fuses to protect control circuit elements;
- When limit microswitches and an emergency stop button are connected, the motor is inhibited if the equipment operating rules are violated;
- The MCP has a tall post for floor mounting, while the PCP has a short post for tabletop mounting;
- Marking and assembly of control circuit wires in a bundle;
- The MCP housing and cover are made of metal 1.5 mm thick;
- The PCP housing is made of impact-resistant plastic;
- Visual observation of the position of the thermal overload relay button and circuit breaker handle through the transparent cover of the PCP.



**PCP3** control panel



**MCP3** control panel on support post



**CMCP3** control panel on support post